



Ministry of Agriculture & Fisheries

Visual Symptoms of Citrus Greening & Its Vector



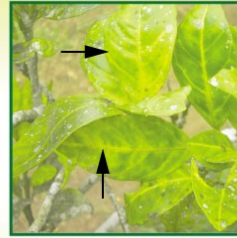
Food and Agriculture Organization of the United Nations



Citrus tree with 'Yellow Shoot'



Classical blotchy mottle on lime



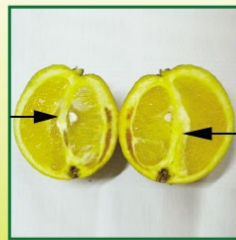
Yellowing of veins of leaves



Corky raised mid-veins



Colour inversion of fruit (ripening of fruit top to bottom)



Misshaped/lopsided fruit with curved columella



Navel fruit affected by greening



Normal seeds (A) and aborted seeds (B)

Vector: The Asian Citrus Psyllid (ACP) - *Diaphorina citri*



Psyllid eggs on young flush



Psyllid nymph secreting honey dew



Adult psyllids feeding on young flush



Notching of leaves caused by psyllid feeding

Not Citrus Greening



Magnesium deficiency



Greasy spot on both sides of leaves



Chimera (Genetic disorder)



Zinc deficiency